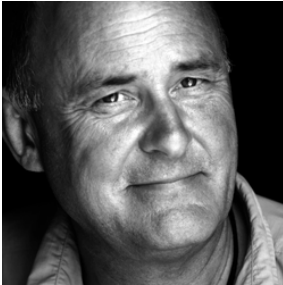




C H A R L I E   W A I T E



## One to One Tuition with Charlie Waite

A One to One session is ideal if you want to accelerate your development as a landscape photographer. In a One to One environment, Charlie is able to specifically tailor his teaching and share his insights and perspectives in ways that are particularly pertinent to your own priorities.

The day is designed to be both an intensive learning experience as well as a very enjoyable day making photographs.

The One to One Day typically begins at 10am with a review of 5 images from the participant's portfolio (which they are asked to bring). This gives the opportunity for you to get some immediate feedback on the technical and creative elements of your images and enables Charlie to tailor the day's shoot to ensure it will be most beneficial to your photography. The rest of the morning will be spent visiting up to 3 locations within the local vicinity to give you the opportunity to photograph in the context of different lighting and landscape situations. Over lunch (which is included) you will have the opportunity to discuss with Charlie your aspirations as a photographer and perhaps gain some new insights into how you might achieve those. During the afternoon you will be taken to up to 2 local locations to continue your discovery of new techniques and new understanding of how to make striking landscape images. The One to One day concludes with a final review of the images you have made during the day, during which you will receive suggestions for editing to make the most of the in-camera images, discussion of what you have learnt during the day and recommended areas of focus for your further development as a photographer.

While you are photographing on location Charlie will cover specific topics such as the recognition of what may make a good landscape photograph, a greater understanding of composition, learning to define the photographic objective and discovering the way in which certain elements within the image can be made to interlock with one another to ensure a cohesive and satisfying whole. There will be considerable tuition on lighting and learning the extent to which certain surfaces reflect and absorb light and how the quality and intensity of that light can be understood, harnessed and directed to emphasise or subdue particular areas of the image. In addition, Charlie will work on the need to understand how to convey depth and a sense of dimension into the image. There will be work on capturing extreme subject brightness ranges along with a greater understanding of the distribution of highlights and shadows throughout the image.

One to One's cater for both the digital (Charlie works professionally with the Canon DSLR, Nikon DSLR, and all Panasonic compact ranges) and traditional film users (Charlie works extensively with Hasselblad film camera range and is familiar with all of them).

Charlie enjoys working with both complete beginners as well as advanced landscape photographers and these One to One days are tailored to your individual requirements.

## Availability & Booking

Whilst Charlie's usual location is Dorset, it is possible to explore other locations both in the UK and overseas for either a single One to One day with him, or for a more extended learning experience.

Workshops take place at various times during the year, and we can often be flexible with dates.

Should you wish to book a longer session with him or you have a different location choice in mind, then we are only too happy to discuss this with you.

Gift vouchers are also available for purchase. These make a very suitable gift for anyone who has expressed interest in photography, be it to improve technique and approach or to learn from scratch. If you would like to give a One to One session as a gift or would like any more information, then please do contact the team at [charlie@charliewaite.com](mailto:charlie@charliewaite.com)